

FROM THE PINEYWOODS

NEWSLETTER OF THE PINEYWOODS CATTLE REGISTRY & BREEDERS ASSOCIATION

VOLUME 2 NUMBER 1

JANUARY - MARCH 2004

FROM THE PRESIDENT...

I want to thank everyone for their efforts you make to sustain and promote Pineywoods Cattle.

As a group, we continue to generate some interest, but we need more members to help us reach our goals. Please encourage your customers who may want breeding stock to join our efforts. As with our cattle, the more diversity we can include, the better are our chances of achieving success. If you know breeders who are not involved with our organization, let me know. David James or I will contact them if you think we should. At the very least, I would like to have them on our contact list. I make an effort to know and keep a record of who has Pineywoods Cattle. Even if they are not members, one of us may be interested in buying cattle from known herds. If I know about the herds, I can share the information with anyone unable to get stock from members.

Unfortunately, I must also report the loss of three breeders in late 2003. Emmitt Travis, Ollie Vice and Jack Bayliss passed away. Emmitt had been involved with the organization of the Pineywoods Cattle Registry & Breeders Association and served as our first Vice President. He provided much needed information and contacts in south Alabama. Emmitt's herd is to be sold, but I understand that another Pineywoods breeder has the first option. Mr. Ollie Vice had one of the old herds. His herd included some of the old Vice family line as well as more recent additions from the Conway bloodline. Fortunately, his son plans to maintain that herd. Jack Bayliss began his herd in the 1950's and he maintained it until recent years when his entire herd was sold.

If I can help anyone or provide any contacts or information, please let me know.

David Ozborn

2004 ANNUAL MEETING SET

The Annual Meeting for 2004 will be held on the Mitchel Amason farm near Mize, Mississippi at 12:30 pm on Saturday April 17th. The Amasons have graciously offered to provide lunch. The meeting will immediately follow lunch. We have included a map in this newsletter to show the location of the farm. Also, on the map is the Amasons phone number should you need further directions. You may also call David Ozborns cell phone at (601) 906-0595.

ON THE AGENDA...

- Reading Minutes of the June 7th, 2003 Annual Meeting.
- Reading of the Financial Report.
- Report on the PCRBA website.
- Report on the newsletter.
- Discussion of possible advertising for the Association.
- Discussion of the possibility of holding a Pineywoods Cattle sale.
- Consider restating the Bylaws to include the Amendment as passed in the 2003 Annual Meeting.
- Elect one member of the Board of Directors.
- Set the date and location for the 2005 Annual Meeting.

2004 MEMBERSHIP DUES

Membership dues for the 2004 calendar year are now due. Annual dues are \$25. for both the Regular and Associate memberships. Both entitle the member to receive the newsletter and attend meetings and additionally entitle Regular members to register any number of cattle and to vote on business of the Association. The Association depends on these dues to carry out its objectives. Dues may be paid at the meeting or mailed to:

David Ozborn
3643 Highway 18
Brandon, Mississippi 39042

TO HAZELHURST

TO JACKSON

**STAR INDICATES
MITCHEL AMASON
FARM**
(601) 733-5663

MAGEE

5 MILES

3 5/10 MI

57 ROAD *

9 MILES

3 5/10 MI

MIZE

HWY 35

MT. OLIVE

5 7/10 MILES

HWY 49

HWY 28

TO HATTIESBURG

TO LAUREL

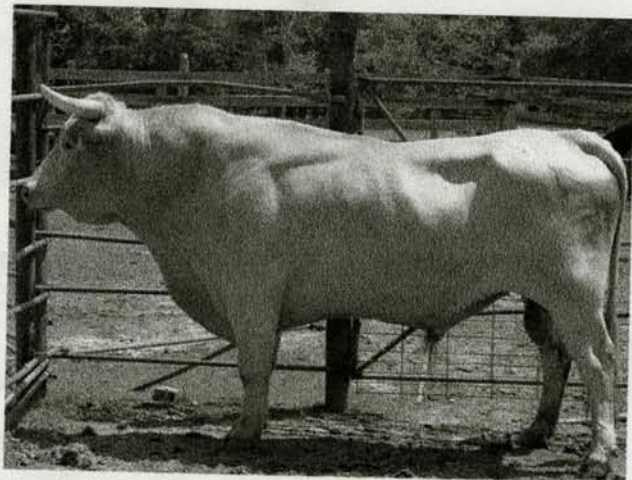
PINEYWOODS CATTLE: *The Griffin Line* by David D. James

The Family

In the 1820's William Griffin moved to the Moss Point Mississippi area and there in 1840 purchased his first property. With profits earned by selling dried venison in Mobile Alabama he purchased many large tracts of land and built large herds of cattle, that by the 1850's numbered in the thousands. It was about this same time that he worked rafting timber down Black Creek and the Pascagoula River to Moss Point.

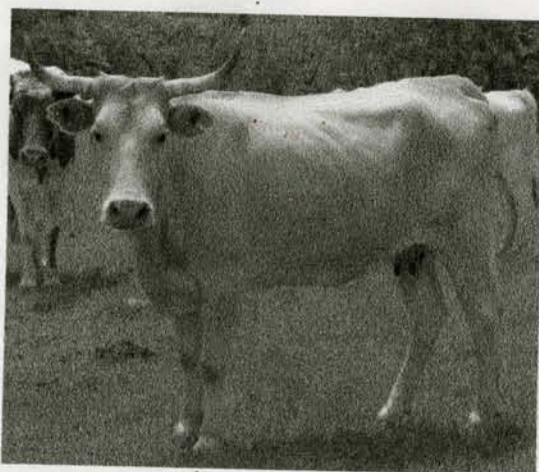
In 1849 Griffin joined the sawmill concern of Arnold, Sheldon & Co. and in 1850 he formed a partnership that was to last ten years with William Sheldon, J. M. Arnold and J. P. Arnold. After a steam boiler explosion caused the death of one of the Arnolds, Griffin became the manager of the mill with the remaining two partners managing the marketing end of the business. The firm shipped finished lumber from their Moss Point mill to company owned retail lumber yards in New Orleans and Boston. The business expanded in 1858 with the purchase of a gang saw mill. In 1860 per their agreement the partnership was dissolved.

The business had been very prosperous and by this time Griffin owned nearly forty slaves. Griffin purchased the interests of his former partners and with his sons formed William Griffin & Co.. In addition to the mills the firm operated ships, barges, a shipyard, turpentine stills, and a commissary store among other enterprises. After the War Between the States, Lorenzo N. Dantzler, who had married William Griffins daughter Sarah joined the partnership. The firm sold squared timber for ship masts and finished lumber in France. It was on a business trip to the Iberian peninsula in southern France that Griffin first saw and was impressed by the yellow cattle he saw there. He imported some three hundred head of these to south Mississippi, presumably on company ships.



After the dissolution of William Griffin & Co. in 1877, Lorenzo Dantzler rented a sawmill from his father-in-law and formed the L. N. Dantzler Lumber Company. This new firm built new mills, bought existing mills, acquired planing mills, drying kilns, timberland and operated a logging railroad. Business suffered in the 1920's as the timber played out and mills were closed. Some mills were reopened as the timber regrew. After 1949 L. N. Dantzler Lumber Company operated only as a tree farming company, selling trees on a selective cutting basis. In 1966 International Paper Company purchased

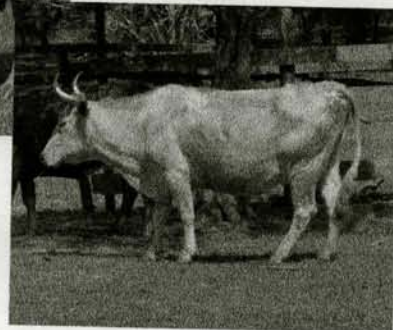
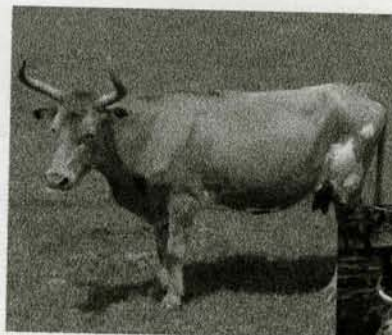
the company and to this date still own and manage the remaining Dantzler timberlands.



The Cattle

William Griffin ran his cattle on the free range along Black Creek and the Pascagoula River. Unlike most lines of Pineywoods which are cattle of Spanish ancestry, as previously stated these cattle originated in France. The suggestion has been made that they might be the ancestors of the Charolais breed or at least share a common ancestry. Griffin cattle can be any one of a number of shades from a pale yellow to a deep almost orange color. Some animals may also have white on them. Bulls may weigh in the 1200 pound range and cows in the 800 to 900 pound range.

A number of years ago Luther Carter milked twenty to thirty Griffin cows at his dairy. These cows reportedly gave less milk than Jerseys but the butterfat content was as high or higher. Additionally meat quality is reported to be good.



The Outlook

The number of Griffin cattle are estimated to be as few as six or seven but certainly less than one dozen and not as plentiful as Carter, Conway, Barnes, or Hickman cattle. The outlook is not nearly so bright for Griffins as in these other lines. The one thing that makes us hopeful is that the bull and cows shown here are already assembled in one herd owned by Billy Frank and Jess Brown. The Browns have the knowledge and I believe the desire to work and increase the numbers of Griffin cattle.

PHOTOGRAPHS BY TAMMY JAMES