



Celebrating the 6th Annual Pinewoods

The 6th annual PCRBA sale was held on Saturday May 12, 2012 the Stone County Fairgrounds in Wiggins, MS. This year the cattle pens were all outlined with Cedar on each pen as opposed to the Magnolias last year. Bidding started out slow but ended with getting all but 3 lots sold out of lots of top sale cattle. Some top cattle represented old strains of Hickman, Diamond, and Griffin. This year we had a few call in

bids from folks that could not attend the sale, one of which was the high volume purchaser Mr. Hunter Lewis. Cow/Calf Pairs sold for an average of \$1100, Bred Cows \$900, Heifers \$650, and Bulls \$700.

All in all, over 50 members, buyers, and friends attended. Buyers started first herds and expanded old herds, sellers contributed to the genetic distribution of various strains, and all enjoy camaraderie of the Pinewoods community, swapping stories and information on this valuable breed. Be sure to renew your PCRBA membership by December 31 to continue your role in PCRBA events.



Contents

Celebrating the 6th Annual PW Breeders Auction.....	1
Welcome, Recent PCRBA Members.....	3
Call for Articles.....	3
PCRBA 2012 Officers, Board of Directors, and Support Staff.....	3
Remembering the Past.....	4
Advertise Your Brand Here.....	4
Breeders' Tips:	
<i>Bulls or Steers?.....</i>	5
<i>Purchasing Tips for Pinewoods Cattle.....</i>	6

Pineywoods People

Many dedicated PCRBA officers, members, & friends contribute their time to make this event a success. We are continually grateful for individuals and families like the Browns and the Diamonds whose hard work and dedication to Pineywoods and PCRBA make our Breeder's world the rewarding experience that we enjoy.



PCRBA President Jess Brown, combines full timework, Pineywoods development, education, and advice to other breeders.



Jackie Diamond Lee, Linda Diamond, Renee Diamond



Greg Diamond & Dottie Diamond



Display for PCRBA at the Long Beach, MS Historical Society Meeting. Billy Frank Brown spoke to folks on the MS Gulf Coast on PW Cattle Family History.

Welcome, Recent PCRBA Members

Vic Boyles
Bogalusa, LA 70427
fboyles@att.net
985-735-7564

[Culbertson, LLC](#) (company name)
Mr. Hunter Lewis (owner)
Mr. Cooper Holmes (herd manager)
Marion, AL

Ciara D. Fountain
1306 Old Hwy 26
Perkinston, MS 39573

Tom Fuller
354 Eddie Martin Road
Buena Vista, GA 31803
Charitieg24@aol.com
706-573-7484

John McKinley
Bay Springs, MS 39422

Don & Jo Ann Popkess
Crossroads Family Farm
47647 Goats Bluff Road
Wister, OK 74966

dpopkess@gmail.com
918-277-3763

Mike Whorton
10406 US Hwy 231
Watumpka, AL 36092
whorton10524@earthlink.net
334-315-9201

PS: Annual membership dues are \$35 and include registration privileges, emailed copies of the newsletter, and free advertising. To enjoy these and other membership services, send your best, current email address to bfritz@gsu.edu, be sure to keep your annual dues current for 2012, and renew again by January 1, 2013.

Call for Articles

Your newsletter, *From the Pineywoods*, needs your help and expertise for articles. While full articles are always welcome, you can send in bits of information on any subject related to Pineywoods and we will work it into the newsletter. Some current topics are

1. Memories and thoughts about previous Pineywoods generations.
2. Who is breeding which strains?
3. Marketing information.
4. Pineywoods in the news.
5. Tips for new breeders.
6. Historical stories and information.

PCRBA 2010-2011 Officers, Board of Directors, and Support Staff

Officers

Jess Brown, President
cowpenecreek1@aol.com
Julie Brown, Secretary/Treasurer
Ryan Schaffer, Vice President
schafferqh@yahoo.com

Board of Directors

Thomas Allen
ta133636@suddenlink.net
Mitchell Amason
Billy Frank Brown
Greg Diamond
Jim McPherson

Support Staff

Bill Fritz, Webmaster
wjfritz@mindspring.com
Bonnie Fritz, Newsletter Editor
bfritz@gsu.edu
Susan Nicotra, Advertising
susannicotra@suddenlink.net
Dr. Phillip Sponenberg, Registrar
dpsponen@vt.edu
Edie Varnado, Advertising
camptopisaw@wildblue.net

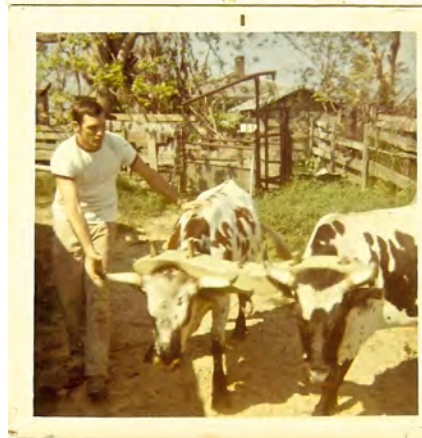
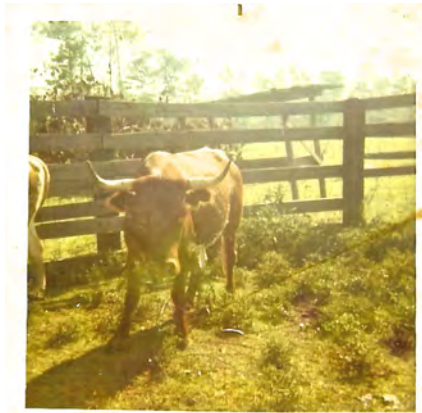
Remembering the Past

From Jess Brown:
I have attached the following 4 photos that were taken on same day in late 1960's.

Names include Rip, the red steer mated to Speck, not shown, who was identical markings but yellow in color.

Edmond Brown is pictured with V.E. Brown's oxen in Wiggins, MS.

If you have old pictures and stories of Pineywoods, please share them with fellow PCRBA members on this page. Heritage is a major part of our organization. Send to the PCRBA address at the bottom of this page..



Advertise your brand here.

For a limited time, the newsletter will carry free advertising so take advantage! You can send us an ad that is ready to go or just send in information and we will organize it for printing. Size will depend on the space available. Contact Bonnie

Pineywoods Cattle For Sale



Herd bull, Bayliss/Griffen/Conway, black and white, five to handle, quality calves. Price is \$1100.00.

Lynda Jarrell,
40 L J Farm Road
Petal, MS 39465,
601-606-1335
lyndajarrell@bellsouth.net

Updated 7/24/12



4 year old registered Hickman bull, brindled with red and blue on white, \$650.



Barnes Cattle For Sale




Barnes Bulls for Sale
Curtis Bilyeu
Dothan, AL
334-793-3295
cmbylveu@aol.com
Added 9/25/11



3 year old, registered Hickman bull, red and white spotted, \$650. Edie Varnado, Summit, MS 601 551 8744



Yeller Griffen Bull Semen \$50 per straw, Jess Brown, Poplarville MS

BREEDER'S TIPS from PCRBA President Jess Brown

Bulls or Steers?

The question often comes up " Should I castrate my bull calf or calves?' . Many times working with heritage livestock with only a limited number of cattle within a population or strain is often a hard decision, but a very critical one.

In order to help a population survive, they need a job. The most important job cattle can have today is to be a food source and the list goes down from there (because we all know there are many uses from a bovine). Back in early days, this high ranking job would have been a live trade commodity or pulling power of ox teams . But modern civilization has taken these jobs away. So in order to keep a population going it is more important to save your top heifer calves than it is to keep bull calves. Bull calves that are fast growers, show correct breed character, and are very masculine with broad heads, thick muscled necks and hind quarters should be good candidate. The odd thing here isthe bull calf (singular) that may turn out to be a potential herd sire is probably one out of 75, maybe more than that. I can say this because I personally have over 200 head of cows and only keep 2 and stretch it saying 4 calves a year to be retained for potential herd sires. This number is half or less by the time these four become yearlings. We as PCRBA members need to first start helping the most hardy cost efficient bovine population grow by keeping heifers and cows in place of unused bulls that serve no purpose. But could be purposely used as a consumable commodity to help insure the future of PW Cattle.

Common beef breeding practice is 1 bull per 25 head of cows. That recommendation might have to include more bulls for rare strains to make sure that the strain has enough genetic variation going in it. Bulls from the "rarest of the rare" might actually be retained more from ancestry than from looks. However, any exceptions to the "1 for 25" rule needs to be done with clear-headed reasoning. Never fool yourself that using a substandard bull to save a bloodline is anything other than a short-term step to a longer-term goal! While bulls from the "rarest of the rare" lines do need to be saved, this is very different from saying that these bulls might have widespread use in other herds. It gets complicated, but the bottom line is that herd bulls should be excellent, and this is especially true of bulls saved for sale to others. Dr. Sponenberg will help with breeding management from a geneticist view that will help the cattle flourish and in a herd of sound quality and genetics..

One important thing to help PW Cattle have an important role in the current economy is going to be PROMOTION. In order to do this we need as many steers as possible for beef . The best way to get these cattle promoted is to start with your local community/family and expand from there. Start by inviting family and friends to dinner or encourage them to try a 1/2 or 1/4 of side of beef at home. The general media cannot accuse PW cattle as being a high fat source because these cattle are super lean. If not cooked correctly, the leanness can make the beef seem tough. So we have to educate consumers as to cooking techniques simply because it is very different from grocery store beef that has been infused with water and has excess fat.

As stated in his 1814 travel journal along the old "Federal Road" from Ft. Stodard, AL [present day Mt Vernon, AL] to Madisonville, LA. Andrew Jackson's Topographical Engineer, Major Howell Tatum wrote " The whole of this route contains excellent range for cattle which has become an object of primary importance with the settlers in this quarter, cattle being considered as a species of circulating medium in most of their contracts. In fact this currency circulates pretty generally from hence (Madisonville, LA) to and on the waters of Tombigby and Mobile Rivers (Alabama).

Bulls or Steers? (Continued)

These old woods cows have made a difference in the evolution of the Southern United States, and that has impacted our country as a whole dating back as early as the 1500's. The first cattle drives started when cattle were driven from Florida to Texas, not Texas to Kansas!

In summary, take a good hard look at your herd. Every bull needs to take the herd somewhere in a positive direction. Only use the best of the best while also making sure that rare lines don't disappear. In most cases the space taken up by extra bulls could be taken up by cows – and the breed would benefit from that!

Note from Phil Sponenberg

This is good. I think the real issues here are:

Steers are useful.

Few bulls are superior.

Superior bulls should be the ones in use.

In rare lines, we have to make exceptions. but – not every bull calf can be this exception!

Purchasing Tips for Pineywoods Cattle

- 1 Do your homework first!
- 2 Become a PCRBA Conservation / Breeder Member
- 3 Visit with PCRBA Members & Cattle
- 4 Make sure you have adequate land & facilities
- 5 Have a breeding program (strain specific or cross-strain)
- 6 Make sure the cattle you are purchasing are registered and recognized by PCRBA. This will insure that the cattle are pure and have no outside genetics.

The main idea I'm trying to emphasize is for people to purchase registered cattle from reputable breeders. There are cattle being offered "for sale" to folks that are not pure PW cattle. They may have some in them, but they also have outside genetics and therefore can't be registered.

Note from Bill Fritz

These are great tips. I would also suggest considering a couple of others that I think get new breeders in trouble:

1. Start small with two or three head and slowly build the herd as you gain experience with the breed.
2. Plan ahead with fencing so that you can keep the Pineywoods herd separated from other livestock. This is both to keep the Pineywoods genetically pure and to be sure they introduce them gradually to other livestock.